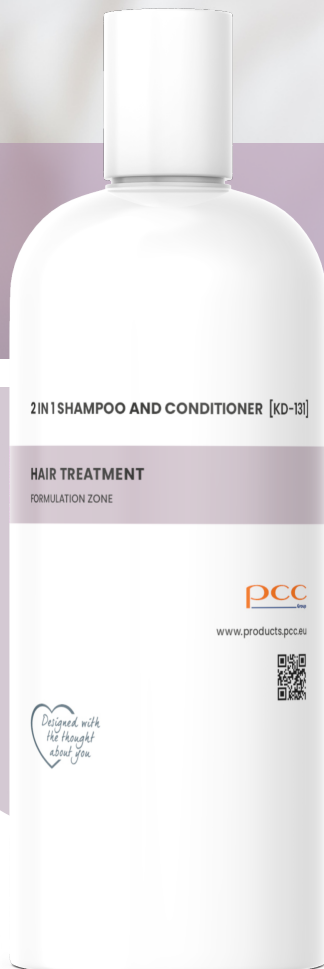




CUIDADO PESSOAL

TRATAMENTO DE CABELO



SHAMPOO E CONDICIONADOR 2 EM 1 [KD-131]

SHAMPOO E CONDICIONADOR 2 EM 1 [KD-131]

PHASE	INCI	BRAND NAME	CONCENTRATION [%]	FUNCTION
A	Aqua		até	solvente
	Sodium Laureth Sulfate	SULFOROKAnol® L227 / 1	12,00	surfactante
	Zinc Coceth Sulfate	exosoft-zn	20,00	surfactante
	Polyquaternium-7		1,00	Formato de filme
B	Aqua, Sodium Benzoate, Potassium Sorbate		0,50	conservante
	Allantoin		0,01	ativo
	CI 77891, Mica		0,01	Corante
	PEG-7 Glyceryl Cocoate	rokacet-ko300g	0,50	surfactante
	PEG-120 Methyl Glucose Dioleate		1,00	espessante
C	Glycerin		0,45	solvente
	Xanthan Gum		0,20	modificador de reologia
D	Sodium Laureth Sulfate and Cocamide DEA and Glycol Distearate	EXOppearl N	1,00	surfactante
E	Parfum		0,50	fragrância
F	Cocamidopropyl Betaine	ROKamina®K30	6,00	surfactante
G	Sodium Chloride		0,50	espessante



pH		4.7 - 5.5
Aparência	método visual	gel perolado
Viscosidade [cP]	Brookfield LV, fuso 34, velocidade 3,0 RPM, T: 25°C	5000 - 12000
estabilidade	1 mês a 5°C, 20°C, -5/40°C	confirmado

Procedure:

1. Em um recipiente principal, combine os ingredientes da fase A – misture até ficar homogêneo (solução turva). Em um recipiente separado, combine os ingredientes da fase C – misture até ficar homogêneo.
2. Prepare os ingredientes restantes em copos separados.
3. Adicione os ingredientes da fase B – misture até ficar homogêneo.
4. Adicione os ingredientes da fase C enquanto mistura – misture até ficar homogêneo.
5. Adicione os ingredientes da fase DF enquanto mistura – misture até ficar homogêneo.
6. Adicione lentamente o cloreto de sódio enquanto mistura – misture até ficar homogêneo.



The information in the catalogue is believed to be accurate and to the best of our knowledge, but should be considered as introductory only. Detailed information about products is available in TDS and MSDS. Suggestions for product applications are based on our the best of our knowledge.

The responsibility for the use of products in conformity or otherwise with the suggested application and for determining product suitability for your own purposes rests with the user.

All copyright, trademark rights and other intellectual and industrial property rights and the resulting rights to use this publication and its contents have been transferred to PCC Rokita SA, PCC EXOL SA and other companies of the PCC Group or its licensors. All rights reserved.

Users/readers are not entitled to reproduce this publication in whole or in part, nor are they entitled to reproduce it (excluding reproduction for personal use) or to transfer it to third parties.

Permission to reproduce it for personal use does not apply in respect to data used in other publications, in electronic information systems, or in other media publications. PCC Rokita SA and PCC EXOL SA shall not be responsible for data published by users.

Please visit our capital group business platform to check full range of products for personal care.

www.products.pcc.eu

PCC Group
Sienkiewicza 4
56-120 Brzeg Dolny
Poland

e-mail: products@pcc.eu

