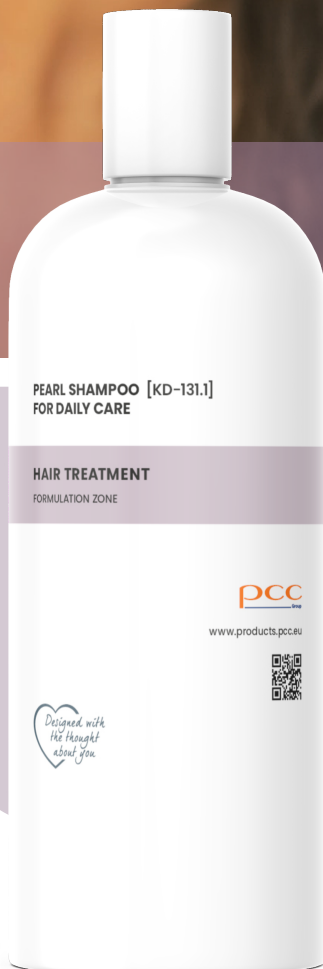




PENJAGAAN DIRI  
RAWATAN RAMBUT



SYAMPU MUTIARA UNTUK  
PENJAGAAN HARIAN  
[KD-131.1]

# SYAMPU MUTIARA UNTUK PENJAGAAN HARIAN [KD-131.1]

PHASE	INCI	BRAND NAME	CONCENTRATION [%]	FUNCTION
A	Aqua		sehingga	pelarut
	Aqua, Sodium Benzoate, Potassium Sorbate		0,70	bahan pengawet
	Betaine		2,00	aktif
	Lactic Acid		0,25	pelaras pH
B	Ammonium Lauryl Sulfate	rosulfan-a	30,00	surfaktan
C	Cocamidopropyl Betaine	ROKAmina®K30	5,00	surfaktan
D	Parfum		0,35	wangian
E	Glycol Distearate, Laureth-4, Cocamidopropyl Betaine	EXOpearl SF	1,00	agen mutiara
F	Sodium Chloride		1,30	pemekat



pH		4.5 - 5.5
Penampilan	kaedah visual	gel mutiara
Kelikatan [cP]	Brookfield LV, gelendong 34, kelajuan 6.0 RPM, T: 25°C	2500 - 6000

## Procedure:

1. Dalam bekas utama satukan bahan dari fasa A. Gaul sehingga sekata.
2. Masukkan ROSulfan A sambil digaul. Gaul sehingga seragam.
3. Masukkan perlahan-lahan ROKAmina K30 dan Parfum sambil digaul. Gaul sehingga seragam.
4. Tambah EXOpearl SF semasa mengadun. Gaul sehingga seragam.
5. Tambah perlahan-lahan Natrium Klorida. Gaul sehingga seragam. NOTA: Tambah Natrium Klorida dalam bahagian kecil. Kawal kelikatan selepas setiap bahagian.



The information in the catalogue is believed to be accurate and to the best of our knowledge, but should be considered as introductory only. Detailed information about products is available in TDS and MSDS. Suggestions for product applications are based on our the best of our knowledge.

The responsibility for the use of products in conformity or otherwise with the suggested application and for determining product suitability for your own purposes rests with the user.

All copyright, trademark rights and other intellectual and industrial property rights and the resulting rights to use this publication and its contents have been transferred to PCC Rokita SA, PCC EXOL SA and other companies of the PCC Group or its licensors. All rights reserved.

Users/readers are not entitled to reproduce this publication in whole or in part, nor are they entitled to reproduce it (excluding reproduction for personal use) or to transfer it to third parties.

Permission to reproduce it for personal use does not apply in respect to data used in other publications, in electronic information systems, or in other media publications. PCC Rokita SA and PCC EXOL SA shall not be responsible for data published by users.

Please visit our capital group business platform to check full range of products for personal care.

[www.products.pcc.eu](http://www.products.pcc.eu)

PCC Group  
Sienkiewicza 4  
56-120 Brzeg Dolny  
Poland

e-mail: [products@pcc.eu](mailto:products@pcc.eu)

