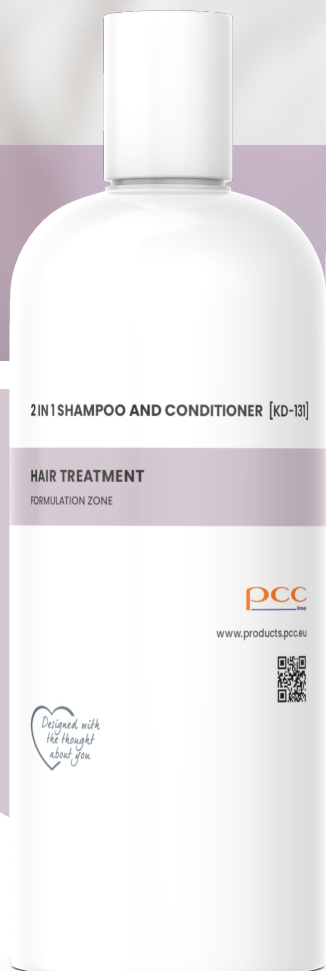




CURA PERSONALE  
TRATTAMENTO PER CAPELLI



SHAMPOO E BALSAMO 2  
IN 1 [KD-131]

# SHAMPOO E BALSAMO 2 IN 1 [KD-131]

PHASE	INCI	BRAND NAME	CONCENTRATION [%]	FUNCTION
A	Aqua		fino a	solvente
	Sodium Laureth Sulfate	SULFOROKAnol® L227/1	12,00	tensioattivo
	Zinc Coceth Sulfate	exosoft-zn	20,00	tensioattivo
	Polyquaternium-7		1,00	filmogeno
B	Aqua, Sodium Benzoate, Potassium Sorbate		0,50	conservante
	Allantoin		0,01	attivo
	CI 77891, Mica		0,01	colorante
	PEG-7 Glyceryl Cocoate	rokacet-ko300g	0,50	tensioattivo
	PEG-120 Methyl Glucose Dioleate		1,00	addensante
C	Glycerin		0,45	solvente
	Xanthan Gum		0,20	modificatore di reologia
D	Sodium Laureth Sulfate and Cocamide DEA and Glycol Distearate	EXOpEarl N	1,00	tensioattivo
E	Parfum		0,50	fragranza
F	Cocamidopropyl Betaine	ROKAmiNa®K30	6,00	tensioattivo
G	Sodium Chloride		0,50	addensante



pH		4.7 - 5.5
Aspetto	metodo visivo	gel perlato
Viscosità [cP]	Brookfield LV, mandrino 34, velocità 3,0 RPM, T: 25°C	5000 - 12000
Stabilità	1 mese a 5°C, 20°C, -5/40°C	confermato

## Procedure:

1. In un recipiente principale unire gli ingredienti della fase A – mescolare fino a renderli uniformi (soluzione torbida). In un recipiente separato unire gli ingredienti della fase C – mescolare fino a ottenere un composto uniforme.
2. Preparare gli altri ingredienti in bicchieri separati.
3. Aggiungere gli ingredienti della fase B – mescolare fino a ottenere un composto uniforme.
4. Aggiungere gli ingredienti della fase C durante la miscelazione – mescolare fino a ottenere un composto uniforme.
5. Aggiungere gli ingredienti della fase DF durante la miscelazione – mescolare fino a ottenere un composto uniforme.
6. Aggiungere lentamente cloruro di sodio durante la miscelazione – mescolare fino a ottenere un composto uniforme.



The information in the catalogue is believed to be accurate and to the best of our knowledge, but should be considered as introductory only. Detailed information about products is available in TDS and MSDS. Suggestions for product applications are based on our the best of our knowledge.

The responsibility for the use of products in conformity or otherwise with the suggested application and for determining product suitability for your own purposes rests with the user.

All copyright, trademark rights and other intellectual and industrial property rights and the resulting rights to use this publication and its contents have been transferred to PCC Rokita SA, PCC EXOL SA and other companies of the PCC Group or its licensors. All rights reserved.

Users/readers are not entitled to reproduce this publication in whole or in part, nor are they entitled to reproduce it (excluding reproduction for personal use) or to transfer it to third parties.

Permission to reproduce it for personal use does not apply in respect to data used in other publications, in electronic information systems, or in other media publications. PCC Rokita SA and PCC EXOL SA shall not be responsible for data published by users.

Please visit our capital group business platform to check full range of products for personal care.

[www.products.pcc.eu](http://www.products.pcc.eu)

PCC Group  
Sienkiewicza 4  
56-120 Brzeg Dolny  
Poland

e-mail: [products@pcc.eu](mailto:products@pcc.eu)

